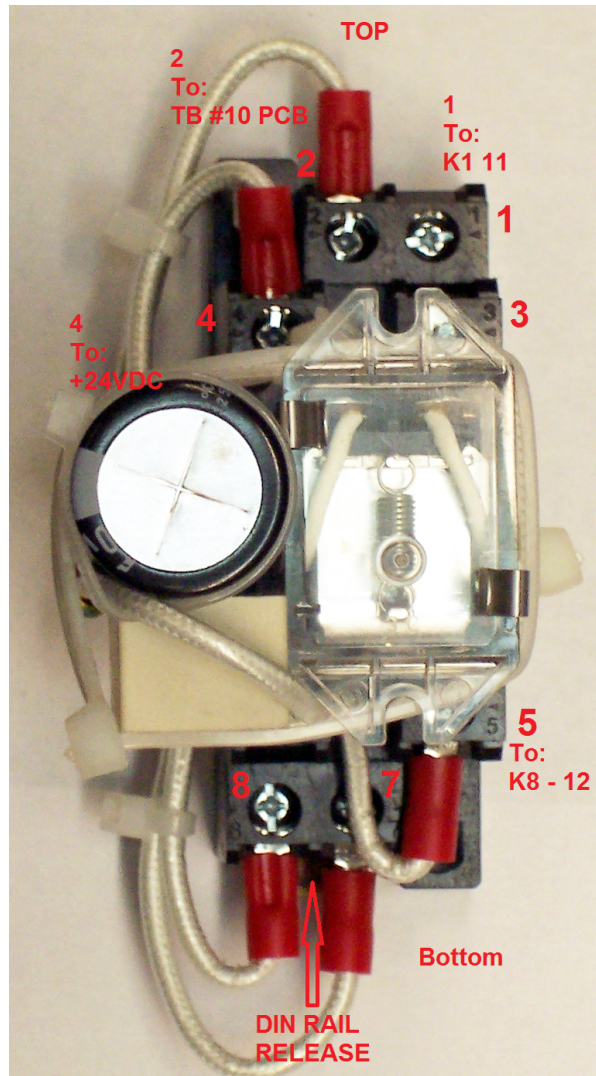
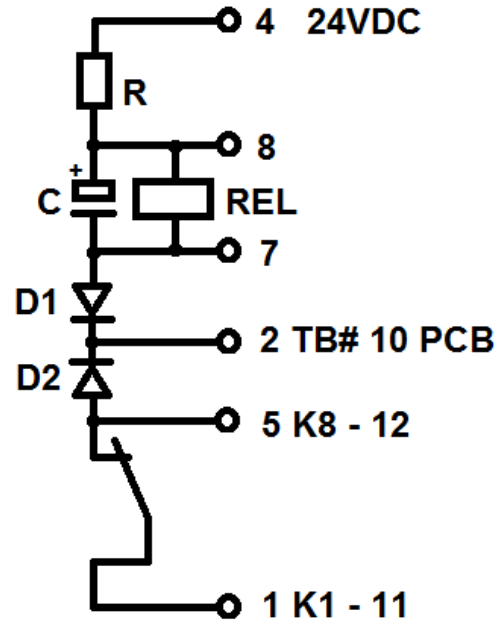


Relay K ext. 8xx Kit for MEP 802A / 803A



Schematic
Relais K ext. 8xx



1; 2; 4; 5; 7; 8 = Terminal # on Relais Socket
 R = 10 Ohm
 C = 4,700uF / 50 VDC
 D1 = 1N4007
 D2 = 1N 5408
 REL = Coil of external Relais 24VDC / 35mA

Relay Socket Terminals # 3 and 6 on this Relay are not used and should not be connected!
 Capacitor C will hold the Relay for app. 4 to 5 seconds after the Auto Start Kit has turned of the Power Output to allow for a cool down without a load. The 4 to 5 sec. should be enough to allow Contactor K1 to turn off and break it's self holding contact between K1 - 11 and K1 - 12.
 After the Relay K ext. turns off, the regular self holding circuit K1 - 11 and K1 - 12 is reconnected to K8 - 12 and the unit can be operated manually.
 The Resistor R has only one function, to reduce the initial inrush current of C to below 3 Amps.
 The Diodes D1 and D2 prevent the Relay K ext. to be activated by Manual Operation and therefor eliminate the possibility of the self holding Contacts K1 - 11 and K1 - 12 to be disengaged during Manual Operations.