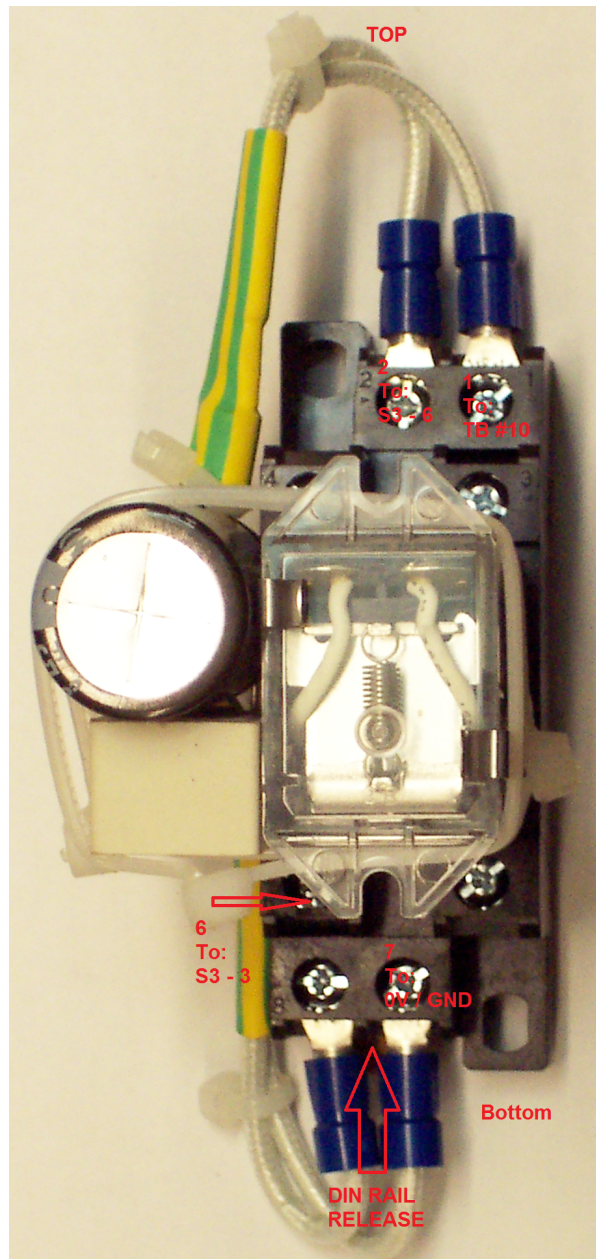
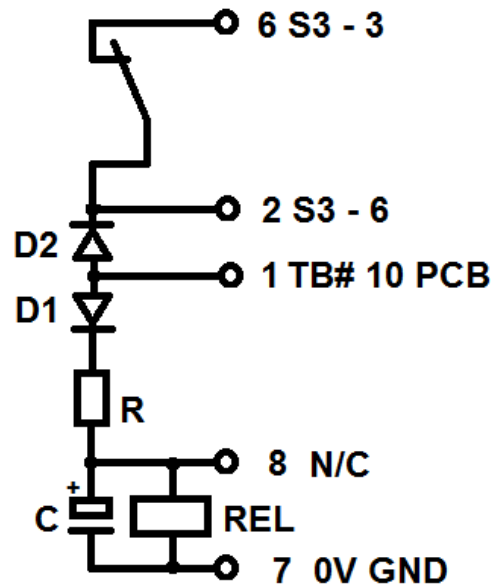


Relay K ext. x03/4/5/6 Kit for MEP 004A / 005A / 006A / 103A / 104A /105A



Schematic
Relay K ext. 004/5/6



1; 2; 6; 7; 8 = Terminal # on Relais Socket
 R = 10 Ohm
 C = 4,700uF / 50 VDC
 D1 = 1N 5408
 D2 = 1N 5408
 REL = Coil of external Relais 24VDC / 35mA

Relay Socket Terminals # 3; #4 and #5 on this Relay are not used and should not be connected!
 Capacitor C will hold the Relay for app. 4 to 5 seconds after the Auto Start Kit has turned of the Power Output to allow for a cool down without a load. The 4 to 5 sec. should be enough to allow Contactor CB1 to turn off and break it's self holding contact CB Aux.
 After the Relay K ext. turns off, the regular self holding circuit CB Aux is reconnected and the unit can be operated manually.
 The Resistor R has only one function, to reduce the initial inrush current of C to below 3 Amps.
 The Diodes D1 and D2 prevent the Relay K ext. to be activated by Manual Operation and therefor eliminate the possibility of the self holding Contact CB Aux to be disengaged during Manual Operations.